




300Mbps Wireless N VDSL/ADSL Modem Router

Fast DSL Router Support
100Mbps VDSL Access

TD-W9960



 VDSL/ADSL/Fiber/Cable
Compatible

 300Mbps
Wireless Speed

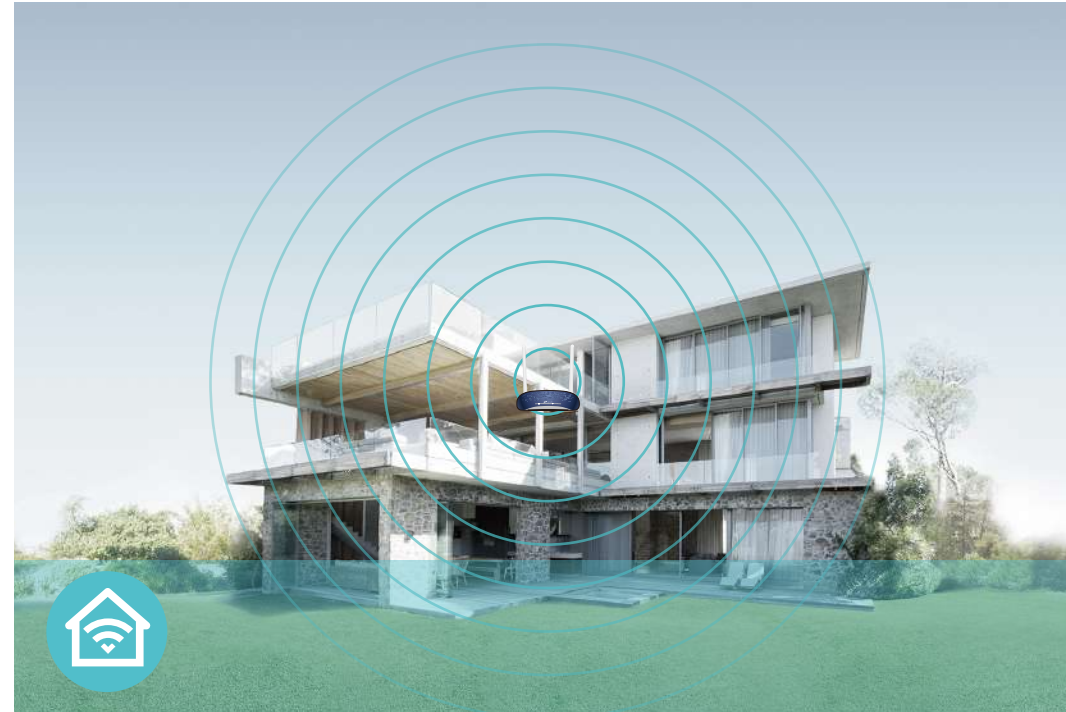
 5dBi Antennas

Features



Speed

- **Ultimate Wireless Speed** – up to 300Mbps makes it ideal for heavy bandwidth consuming or interruption sensitive applications like online gaming, Internet calls and even the HD video streaming
- **High Speed VDSL** – VDSL Broadband Access of up to 100Mbps speed ensures your home internet needs are met



Wi-Fi Range

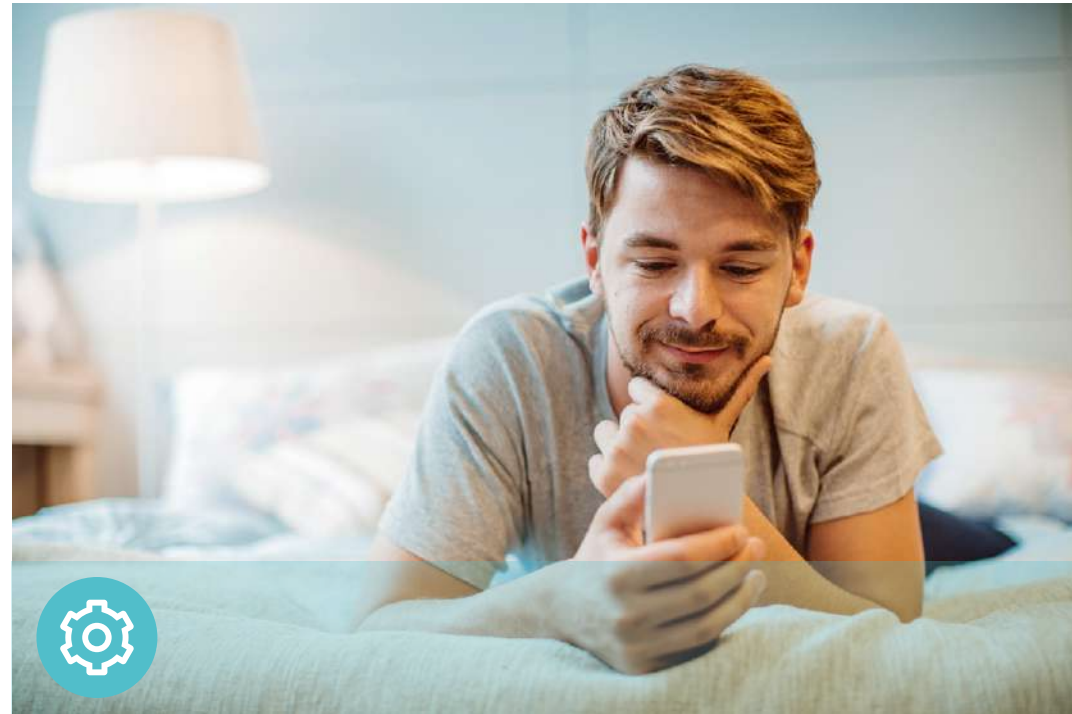
- **Expansive Coverage** – 300Mbps Wi-Fi allows stable speed for wireless activities, such as streaming, surfing, browsing and posting social media
- **High-gain Antennas** – Two 5dBi high-gain antennas expand network coverage across your home



Reliability

- **Easy Bandwidth Management** – IP-based Bandwidth Control makes it easier for you to manage the bandwidth of connected devices

Features



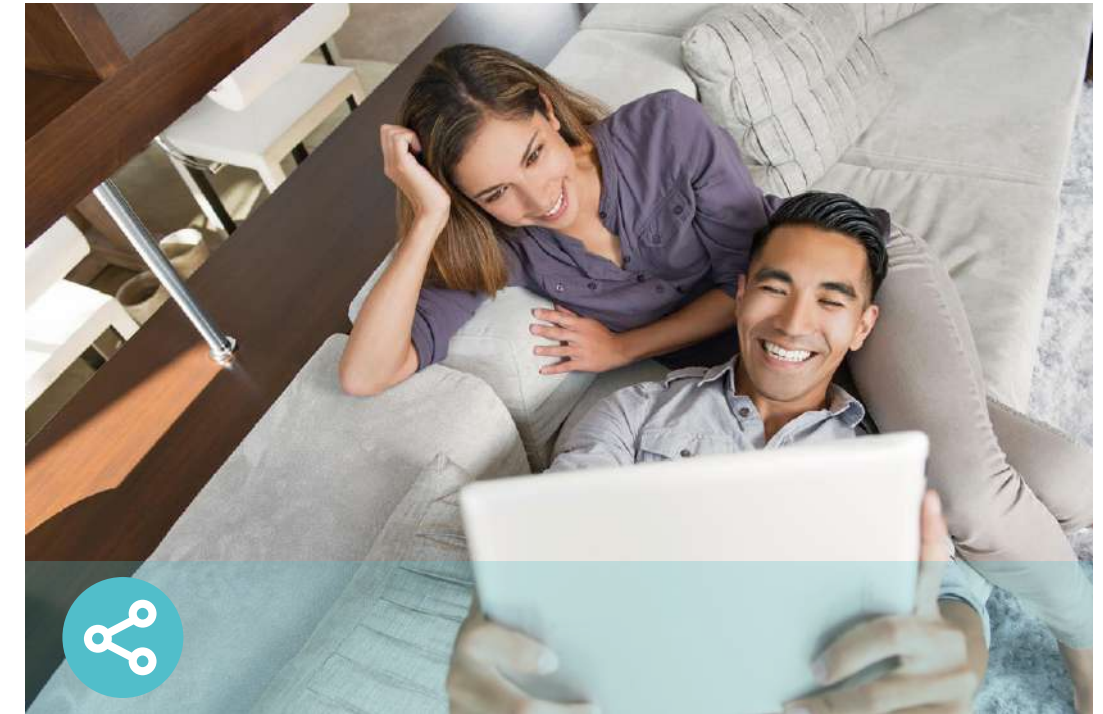
Ease of Use

- **Wireless Schedule** – Wireless Schedule lets you turn the Wi-Fi radio on or off based on a preset timetable
- **Fast Encryption** – Easily set up an encrypted wireless connection at a push of the WPS button
- **Power On/Off** – Conveniently power on or off your router as required



Security

- **Guest Network** – Keep your main network secure by creating a separate network for friends and visitors
- **Parental Controls** – Manage when and how connected devices can access the internet
- **Encryptions for Secure Network** – WPA-PSK/WPA2-PSK encryptions provide active protection against security threats
- **VPN Support** – Secure access to your home or office network from remote devices



Easy Management

- **Intuitive Web UI** – Ensures quick and simple installation without hassle
- **Hassle-Free Management with TP-Link Tether** – Network management is made easy with TP-Link Tether, available on any Android or iOS device

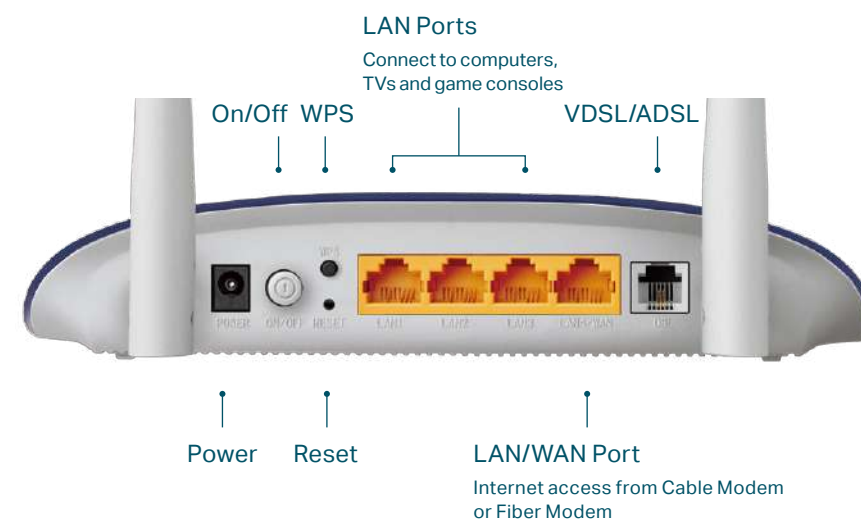
Specifications

Hardware

- Ports: 1 10/100Mbps LAN/WAN Port, 3 10/100Mbps LAN ports, 1 RJ11 port
- Button: WPS Button, Reset Button, Power On/Off Button
- Antenna: 2 × 5dBi Fixed Omni-Directional Antennas
- External Power Supply: 9V/0.6A
- Dimensions (W x D x H): 7.2 × 4.9 × 1.4 in. (181.6 × 125.7 × 36.2 mm)
- IEEE Standards: IEEE 802.3, 802.3u
- ADSL Standards: Full-rate ANSI T1.413 Issue 2, ITU-T G.992.1(G.DMT), ITU-T G.994.1 (G.hs), ITU-T G.995.1
- ADSL2 Standards: ITU-T G.992.3 (G.DMT.bis)
- ADSL2+ Standards: ITU-T G.992.5
- VDSL2 Standards: ITU-T G.993.2, ITU-T G.993.5 (G.vector), ITU-T G.998.4 (G.INP)

Wireless

- Wireless Standards: IEEE 802.11b, 802.11g, 802.11n
- Frequency: 2.400 - 2.4835GHz
- Signal Rate: 300Mbps at 2.4GHz
- Transmit Power: <20dBm(EIRP)
- Wireless Function: Enable/Disable Wireless Radio, WDS Bridge, WMM, Wireless Statistics
- Wireless Security: Supports 64/128-bit WEP, WPA/WPA2, WPA-PSK/WPA2-PSK encryptions



Specifications

Software

- Operation Modes: DSL Modem Router, Wireless Router
- DHCP: Server, Client, DHCP Client List, Address Reservation, DHCP Relay
- Quality of Service: WMM, Bandwidth Control (IP QoS)
- NAT Forwarding: Virtual Server, Port Triggering, UPnP, DMZ, ALG
- Dynamic DNS: DynDns, NO-IP
- VPN Pass-Through: PPTP, L2TP, IPSec Pass-through
- ATM/PPP Protocols: ATM Forum UNI3.1/4.0, PPP over ATM (RFC 2364), PPP over Ethernet (RFC2516), IPoA (RFC1577/2225), PVC - Up to 8 PVCs
- Security: NAT Firewall, SPI Firewall, DoS Protection, IP & MAC Binding, Service Filtering, Access Control, Parental Controls
- Management: Remote management, Telnet management, Command Line Interface, SSL for TR-069, SNMP V1/V2C, Web Based Firmware Upgrade,CWMP(TR-069), Diagnostic Tools
- Guest Network: 2.4GHz guest network
- IPSec VPN: Supports up to 10 IPSec VPN tunnels
- Protocols: Supports IPv4 and IPv6

Others

- Certification: CE, RoHS
- System Requirements:
Windows 10/8.1/8/7/Vista/XP or Mac OS or Linux-based operating system
- Environment
Operating Temperature: 0°C~40°C (32°F ~104°F)
Storage Temperature: -40°C~70°C (-40°F ~158°F)
Operating Humidity: 10%~90% non-condensing
Storage Humidity: 5%~90% non-condensing
- Package Contents
DSL Modem Router TD-W9960
External DSL Splitter
RJ11 DSL Cable
RJ45 Ethernet Cable
Quick Installation Guide
Power Adapter



For more information, please visit

<https://www.tp-link.com/en/products/details/TD-W9960.html>

or scan the QR code left

Specifications are subject to change without notice. TP-Link is a registered trademark of TP-Link Technologies Co., Ltd. Other brands and product names are trademarks or registered trademarks of their respective holders. Copyright ©2019 TP-Link Technologies Co., Ltd. All rights reserved.

*Maximum wireless signal rates are the physical rates derived from IEEE Standard 802.11 specifications. Actual wireless data throughput and wireless coverage, and quantity of connected devices are not guaranteed and will vary as a result of network conditions, client limitations, and environmental factors, including building materials, obstacles, volume and density of traffic, and client location.

www.tp-link.com

TP-Link 300Mbps Wireless N VDSL/ADSL Modem Router

TD-W9960