

Huawei eKitEngine S110 Series Switches

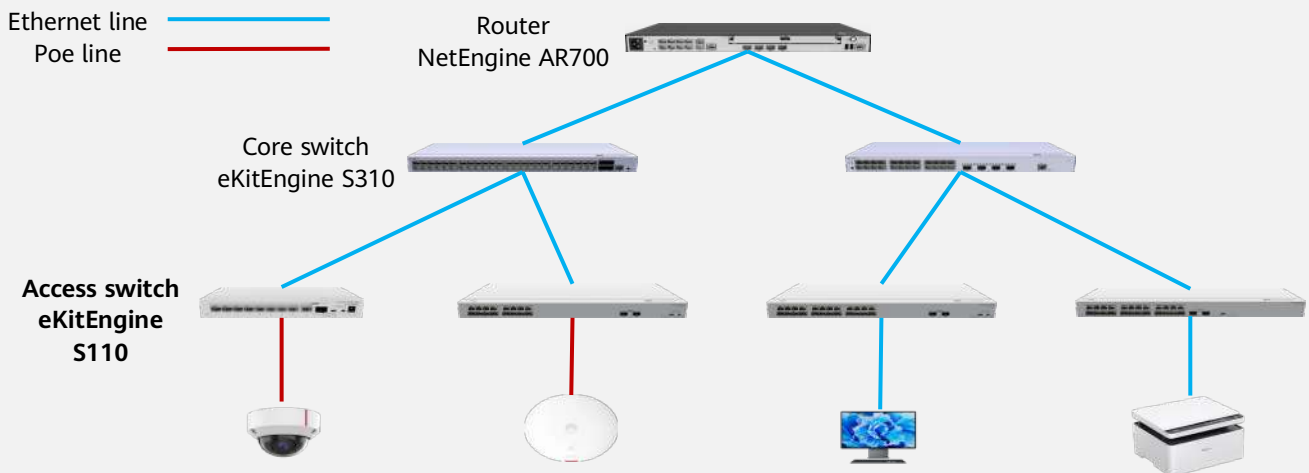


Four working modes

- standard mode
- port isolation
- port bonding
- flow control disabling

plug and play

- configuration-free
- management-free



Huawei eKitEngine S110 series switches (S110 for short) are unmanaged switches designed for the distribution market outside China. The whole series adopts an all-new crystal-like appearance design with great visual impacts, winning itself the German Red Dot Design Award 2022. The newly launched colorways of Silk White and Silver Frost are becoming increasingly popular. In addition, the iconic Huawei logo on eKitEngine S110 series switches gives them a more refreshing look. In terms of aesthetics, a diamond cut design is employed to make the switches more elegant through an integrated and completely seamless surface with sleek corners. Therefore, eKitEngine S110 series switches can be widely used in access scenarios such as SOHO enterprises, and commercial stores.

Product Specifications

| Specifications | eKitEngine S110-8T2ST | eKitEngine S110-8P2ST |
|---------------------------------|---|---|
| Switching capacity | 20 Gbps | 20 Gbps |
| Packet forwarding rate | 14.88 Mpps | 14.88 Mpps |
| Downlink port | 8 x 10/100/1000BASE-T ports | 8 x 10/100/1000BASE-T PoE+ ports |
| Uplink port | 1 x GE electrical port, 1 x GE SFP port | 1 x GE electrical port, 1 x GE SFP port |
| MAC address entry | 4K MAC address entries | 4K MAC address entries |
| Dimensions (H x W x D) | 35 mm x 210 mm x 130 mm | 35 mm x 210 mm x 130 mm |
| Weight | 0.40 kg | 0.91 kg |
| Input voltage | 12 V | 54 V |
| Maximum power consumption | 8 W | <ul style="list-style-type: none"> Without PoE: 10 W With PoE: 158 W (PoE: 124 W) |
| Long-term operating temperature | 0°C to 40°C (0 m to 1800 m) | 0°C to 40°C (0 m to 1800 m) |
| Storage temperature | -40°C to +70°C | -40°C to +70°C |
| Operating humidity | 5% to 95% | 5% to 95% |
| Service port surge protection | ±4 kV | ±4 kV |
| Working mode | Three working modes: standard mode, port isolation and flow control disabling | |
| Heat dissipation mode | Fanless, natural heat dissipation | Fanless, natural heat dissipation |

| Specifications | eKitEngine S110-16T2S | eKitEngine S110-16LP2SR | eKitEngine S110-24T2SR | eKitEngine S110-24LP2SR |
|------------------------|------------------------------|------------------------------|------------------------------|-----------------------------------|
| Switching capacity | 36 Gbps | 36 Gbps | 52 Gbps | 52 Gbps |
| Packet forwarding rate | 26.78 Mpps | 26.78 Mpps | 38.69 Mpps | 38.69 Mpps |
| Downlink port | 16 x 10/100/1000BASE-T ports | 16 x 10/100/1000BASE-T ports | 24 x 10/100/1000BASE-T ports | 24 x 10/100/1000BASE-T PoE+ ports |
| Uplink port | 2 x GE SFP ports | 2 x GE SFP ports | 2 x GE SFP ports | 2 x GE SFP ports |
| MAC address entry | 8K MAC address entries | 8K MAC address entries | 8K MAC address entries | 8K MAC address entries |
| Dimensions (H x W x D) | 43.6 mm x 320 mm x 210 mm | 43.6 mm x 442 mm x 260 mm | 43.6 mm x 442 mm x 160 mm | 43.6 mm x 442 mm x 260 mm |

| | | | | |
|---------------------------------|---|---|--------------------------------------|---|
| Weight | 1.81 kg | 3.2 kg | 2.0 kg | 3.4 kg |
| Input voltage | 100 V AC to 240 V AC, 50 Hz to 60 Hz | 110 V AC to 240 V AC, 50 Hz to 60 Hz | 100 V AC to 240 V AC, 50 Hz to 60 Hz | 110 V AC to 240 V AC, 50 Hz to 60 Hz |
| Maximum power consumption | 10 W | <ul style="list-style-type: none"> Without PoE: 22 W With PoE: 146 W (PoE: 124 W) | 17 W | <ul style="list-style-type: none"> Without PoE: 27 W With PoE: 151 W (PoE: 124 W) |
| Long-term operating temperature | 0°C to 40°C (0 m to 1800 m) | 0°C to 45°C (0 m to 1800 m) | 0°C to 40°C (0 m to 1800 m) | 0°C to 45°C (0 m to 1800 m) |
| | Note: When the altitude ranges between 1800 m and 5000 m, the highest operating temperature reduces by 1°C each time the altitude increases by 220 m. | | | |
| Storage temperature | -40°C to +70°C | -40°C to +70°C | -40°C to +70°C | -40°C to +70°C |
| Operating humidity | 5% to 95% | 5% to 95% | 5% to 95% | 5% to 95% |
| Working mode | Four working modes: standard mode, port isolation, port bonding, and flow control disabling | | | |
| Heat dissipation mode | Fanless, natural heat dissipation | Fanless, natural heat dissipation | Fanless, natural heat dissipation | Fanless, natural heat dissipation |