



Building a Fully Connected, Intelligent World

HUAWEI IdeaHub B3

New Style **Smart Office**

BYOM | AI-powered communication | Smart office collaboration



HUAWEI IdeaHub B3

IdeaHub B3 supports a vast array of features, including 1080p HD cloud meeting, Bring Your Own Meeting (BYOM), Wi-Fi 6 for direct projection, and 16 ms writing latency – serving as the versatile conferencing and display endpoint for today's modern office.



Notes: Data source: national procurement information website



All-in-One Design



8-core dual-engine drive



4K soft light screen with optical anti-blue light



Streamlined body, slimmed down bezels



Rich ports for flexible expansion



TÜV Rheinland Low Blue Light (Hardware Solution) Certification
TÜV Rheinland Eye Comfort Certification

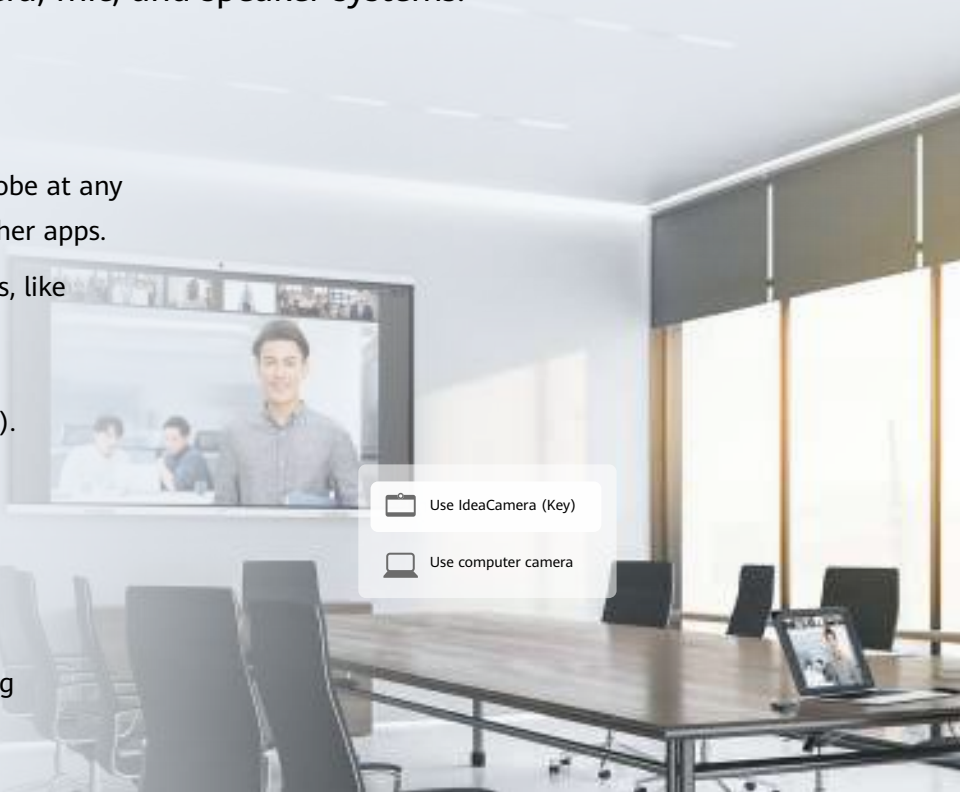
Notes: * Product pictures and display content in this document are for reference only. Actual product specifications and display content (including but not limited to backgrounds, interfaces, and illustrations) may vary.



BYOM

Transfer a video meeting from your PC to enjoy immersive multi-sensory meetings, made possible by IdeaHub's camera, mic, and speaker systems.

- No apps or OPS
- Brainstorm with colleagues across the globe at any time without having to download any other apps.
- Supports mainstream cloud meeting apps, like Webex, Zoom, etc.
- Supports BYOM via the Type-C cable, IdeaShare app, or IdeaShare Key (Type-C).



Native HD Cloud Meeting



OPS-free 1080p cloud meeting
1080p native Huawei Cloud Meeting

AI-powered Communication

Auto-Framing

Golden ratio layout and distortion corrections are supported.

Speaker tracking

Intelligent sound source localization, keeping the speaker in the center position.

Two-person conversation

Two speakers are displayed at the same time.



Professional-grade 4K camera

Glass-plastic hybrid lens built to withstand high temperatures

Silky smooth video over the long haul



Acoustic engine 2.0

Immersive 3D surround sound field

Conference audio as you've never heard it



6-microphone array

DNN-based de-reverberation, 10 m sound pickup

Sound clear from far away

Smart Office Collaboration

Smoother and Smarter Handwriting



16 ms ultra-low writing latency

Writing on a digital screen has never been so smooth, thanks to a cutting-edge AI handwriting prediction algorithm



Feels so write

Switch colors, line thickness and more as you doodle away on screen



Image insertion

Add screenshots to the whiteboard with just a tap in Multi-Window mode²



Handwriting recognition

Convert your handwriting and sketches into digital forms¹



Collaborative creation

Write on the whiteboard along with a colleague



Content saving

Scan the QR code to save whiteboard content right away³

Notes: 1. The intelligent writing recognition function supports recognition of Chinese, English, and 11 types of graphics.

2. In Multi-Window mode, you can tap **Annotation** on the tool bar and insert screenshots on the whiteboard.

3. Content saving is supported on a number of different platforms, including WeChat, Huawei Cloud Meeting, WeLink, and web browsers.

Wireless Projection

Wi-Fi 6 for direct projection, no network connection needed

Network not available? Password giving you pain? Just enable Wi-Fi on your IdeaHub and PC/mobile phone, and the IdeaShare app will automatically initiate a 4K projection, thanks to the innovative Wi-Fi direct projection technology.

Tailored projection solutions for every conceivable scenario*



Daily office work

IdeaShare app, which auto-populates the projection code once you enter the first letter¹



Seamless HarmonyOS support

Wireless projection from the drop-down menu or via NFC on a Huawei phone or tablet



Client communications

IdeaShare Key (Type-C), with no network connection or installation required²



Important occasions

Ultra-smooth HD image, with Type-C cable projection

Notes: 1. The IdeaShare app supports auto-population of projection code in HarmonyOS, Android, and Windows.

2. The Type-C port adapts to HarmonyOS, Android, iOS, Windows, and macOS.

* You can reversely control your personal device on the IdeaHub after projection via Type-C/HDMI cable, IdeaShare Key, or the IdeaShare app. Hardware capabilities on the mobile phone or PC may vary, and the actual experience shall prevail.

Multi-Window for Efficient Multitasking

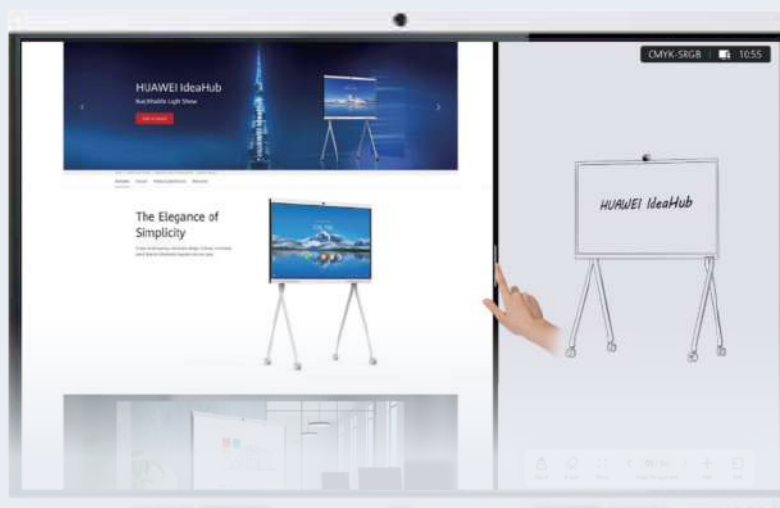


Collaborative discussion: one screen displays two apps



Adjustable window ratio for a flexible layout

Three aspect ratios (1:1, 1:2, and 2:1) are supported.



App Multiplier: Massive Apps to Fit Your Needs

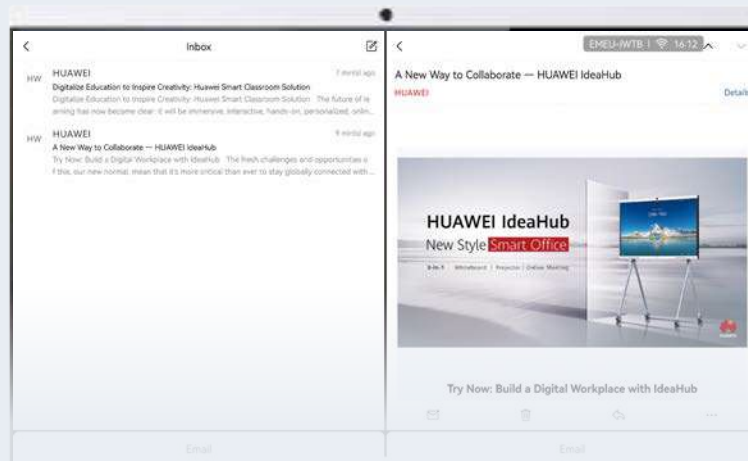


One app can be displayed in dual windows

Seamless app browsing and switching

Navigation page

Details page



Security O&M

Comprehensive, intelligent O&M

The IdeaManager device management platform remotely manages and controls multiple IdeaHubs



Remote management

- Remote setting of the shutdown time in batches
- Remote OTA update in batches



Quick fault rectification

- Inspection and fault alarm
- Self-service diagnosis of typical faults



Precise operations

- Device usage
- Startup animation and bulletin board pushing



Enterprise-level information security

CC EAL5+ high-level security certification for global commercial systems



Access control

- Controllable interface permissions
- Refined permission granularity



Security control

- Separate storage of sensitive data
- Randomized distribution of kernel address space



Operation audit

- Traceable access records



Application Scenarios



Regular meeting room

Local workshop, remote meeting, and executive meeting

HD cloud meeting | Dual Wi-Fi projection | Bidirectional collaboration



Open area

Regular meeting, instant discussion, and team-building meeting

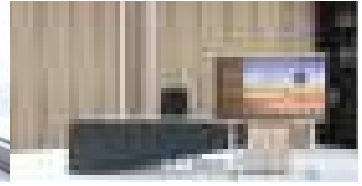
Ultra-low writing latency | Multi-gesture erasure | QR code scanning for content takeaway



Executive office

Business reporting, remote interview, and daily office

Privacy protection | IdeaHub Controller

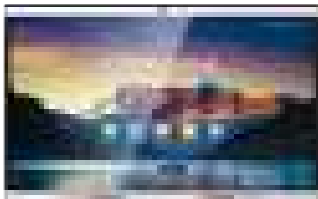


Exhibition and demonstration

Corporate culture display, welcome board, and activity promotions

4K display | HiBoard | Bulletin board

Technical Specifications



Product name	Model		
IdeaHub B3	65": IHB3-65SA 75": IHB3-75SA 86": IHB3-86SA		
Product dimensions (H x W x D)	Package dimensions (H x W x D)	Net weight/Gross weight	
65": 916.1 mm x 1484.5 mm x 91.6 mm 75": 1040.5 mm x 1705.7 mm x 91.8 mm 86": 1180.6 mm x 1953.0 mm x 91.8 mm	65": 1050 mm x 1650 mm x 220 mm 75": 1170 mm x 1900 mm x 220 mm 86": 1300 mm x 2090 mm x 250 mm	65": 35.5 kg/43.0 kg 75": 47.8 kg/57.8 kg 86": 63.0 kg/74.5 kg	

Note: The dimensions and weight may vary with configuration, manufacturing process, and measurement method.

Component

Device	Stylus pen	Cable	OPS
1	2	1 x power cable	Optional

IdeaShare Key	Rolling stand	Wall-mounted bracket
Optional (Type-C/Type-A port)	Optional (65", 75", and 86")	Optional (65", 75", and 86")

Screen

Resolution	Backlight type	Screen lamination	Color gamut
4K	D-LED	Zero-gap bonding	85% NTSC

Camera

Zoom	Max. angle of view	Resolution	TV distortion	Intelligent tracking
2x digital zoom	Pan: 80°/Tilt: 50°	4K	< 2%	Supported

Speaker

Frequency domain	Quantity	Maximum power
100 Hz to 20 kHz	4	30 W

Microphone

Sound pickup angle	Quantity	Sound pickup distance
180°	6	10 m

Wireless connection

Wi-Fi 6	Frequency	NFC
supported	2.4 GHz + 5 GHz	Supported

System

CPU	RAM	Flash	OS	Language
8 cores	8 GB	64 GB*	HarmonyOS and Windows (OPS required)	Chinese, English, French, Japanese, Spanish, Russian, Portuguese, and Italian

Note: * The available storage will be less than the stated value as pre-installed software takes up a certain amount of space.

Meeting

Supported meeting apps	Meeting performance	BYOM
Native meeting apps: Huawei Cloud Meeting SmartRooms	Native meeting: 1080p@30 fps video	Supported

Writing



Writing latency	Whiteboard saving mode	Intelligent writing recognition	Touch sensing distance
16 ms	QR code scanning/Email/Local storage/USB flash drive	Supported	1.5 mm

Port

Front-panel ports	Side-panel ports			
1 x Type-C	1 x USB 3.0	1 x HDMI OUT	1 x 3.5 mm Line-out	1 x RJ45
2 x USB 3.0	2 x HDMI IN	1 x COM port	1 x 3.5 mm Line-in	(10/100/1000 Mbit/s LAN)

Huawei Technologies Co., Ltd.
Huawei Industrial Base, Bantian, Longgang District, Shenzhen
Tel: +86 755 28780808
Postal code: 518129
www.huawei.com

Copyright © Huawei Technologies Co., Ltd. 2023. All rights reserved.
No part of this document may be reproduced or transmitted in any form or by any means without prior written consent of Huawei Technologies Co., Ltd.

 **HUAWEI**, **HUAWEI**, and  are trademarks or registered trademarks of Huawei Technologies Co., Ltd.

Other trademarks and product, service, or company names mentioned are the property of their respective owners.

Disclaimers

The technical specifications described in this document include but are not limited to parameters and performance indicators and vary depending on the actual release. This document does not constitute a warranty of any kind, expressed or implied. Huawei may update relevant information from time to time. Huawei reserves the right to update or correct the information about related products or solutions. Updates are described in detail in the latest release notes or introduction.

Revised on: June 2023



Huawei Intelligent Collaboration
official account